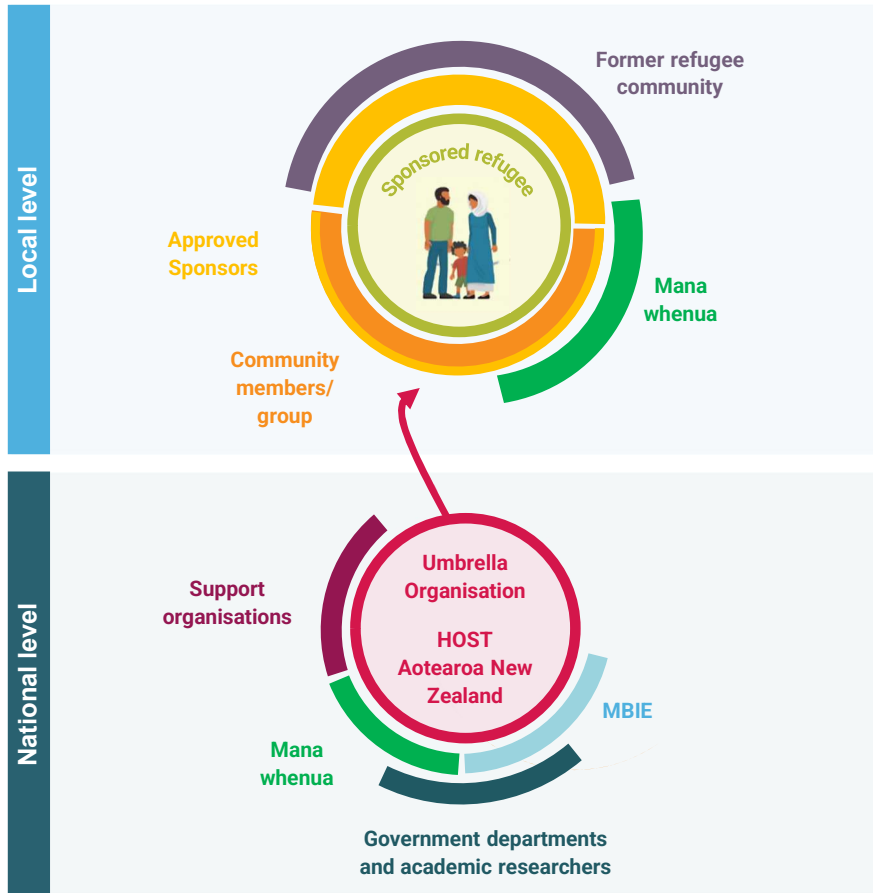


Community Refugee Sponsorship Programme - Community architecture

How the programme will be structured at the local and national level. The level of involvement from each party is indicated by the position and alignment of circles. This structure maximises participation and builds scalability by connecting with other groups through Approved Sponsors.



Sponsored Refugee
the person(s) being resettled to Aotearoa

Former refugee communities
a loose network of people that have the common experience of being displaced from their home and coming to Aotearoa as former refugees or asylum seekers

Community members/group

e.g. any group of New Zealand residents can be a community group for the purposes of sponsorship. This includes groups of friends, family, neighbors, or acquaintances who aren't a legal entity but can partner with an Approved Sponsor to be eligible for sponsorship and get the support they need

Approved Sponsors

e.g. a legal entity such as a school, workplace, NGO, church, sports club, or similar that wants to support a sponsored refugees(s)

Umbrella Organisation (HOST Aotearoa New Zealand)

Organisation with strong community connections and resource to support Approved Sponsors

Mana whenua/tangata whenua

e.g. Māori cultural advisors at a national level who provide direction for the programme, and local hapū or iwi of regions that want to be involved in welcoming sponsored refugees

MBIE

Immigration New Zealand is an agency within the Ministry of Business, Innovation, and Employment.

Government departments and academic researchers

Partners involved in designing, iterating and evaluating the programme and providing services to sponsored refugees