



COMMUNITY REFUGEE SPONSORSHIP PROGRAMME

SPONSORSHIP OVERVIEW

HOST INTERNATIONAL AOTEAROA



Table of Contents

1 What is Community Refugee Sponsorship in Aotearoa

2 Four Phase Process

3 Phase One - Application Process

4 Phase Two - Post Approval

5 Phase Three - Pre-Arrival

6 Phase Four - Post Arrival

Why community-based sponsorship?

“There’s a tremendous desire from people around the world to respond to this crisis. The Global Refugee Sponsorship Initiative creates opportunities for citizens to engage with and participate in a humanitarian effort - for the benefit of refugees and for the benefit of the communities that they live in.”

Gregory A. Maniatis, Director, International Migration Initiative, Open Society Foundations

Establishing a community-based refugee sponsorship programme can bring much added value and resources to reception and integration efforts. Programmes can build on the already existing active civil society with more long-term, committed and coordinated support from communities and citizens, while the state and authorities still retain the ultimate responsibility for receiving and integrating refugees.



Community-based refugee sponsorship can therefore be seen as:

- A stepping-stone to build sustainable resettlement programmes and allow more refugees to access protection and durable solutions;
- A tool to facilitate faster and better integration prospects through engagement of citizens;
- A tool to increase public support for refugees and promote social cohesion;
- A way to mobilise additional capacities and resources to undertake resettlement and integration of refugees in a more effective way through a shared responsibility between government, civil society and individuals for a defined period.

Integration is not something that can be learnt from a textbook, it requires personal interaction and face-to-face meetings between people in the context of real life.

A Community Refugee Sponsorship programme can embody these personal connections, and they can provide newly arrived refugees with a network, which is crucial when searching for jobs, for housing and for social inclusion.

Source: UNHCR

The benefits

Protection

This is, first and foremost, a tool for protecting refugees by providing them with an opportunity to rebuild their lives in safety and with dignity in a new country.

Community-based refugee sponsorship is an exciting way to increase the very limited opportunities for refugee resettlement around the world.

As a member of a sponsorship group, you are an important part of this movement!

Relationship Building

Whether you yourself develop a strong bond with the refugee newcomers or not, the relationships they build in the new community are key to their success in adapting to a new country.

Many sponsorship groups have positive experiences and even remain close friends with the refugee newcomers long after the sponsorship period ends.

It is an incredible opportunity to learn more about the diversity of perspectives and human experiences.

Volunteering and Awareness-Raising

The privilege of many sponsorship group members means that there is an associated potential to improve the lives of those in different circumstances. Varying levels of awareness of power and privilege exist among us, and sponsorship can be a way to engage with this productively.

It may be intimidating, uncomfortable, unfamiliar, confusing, and so much more, but is an experience of growth at the individual and community levels.

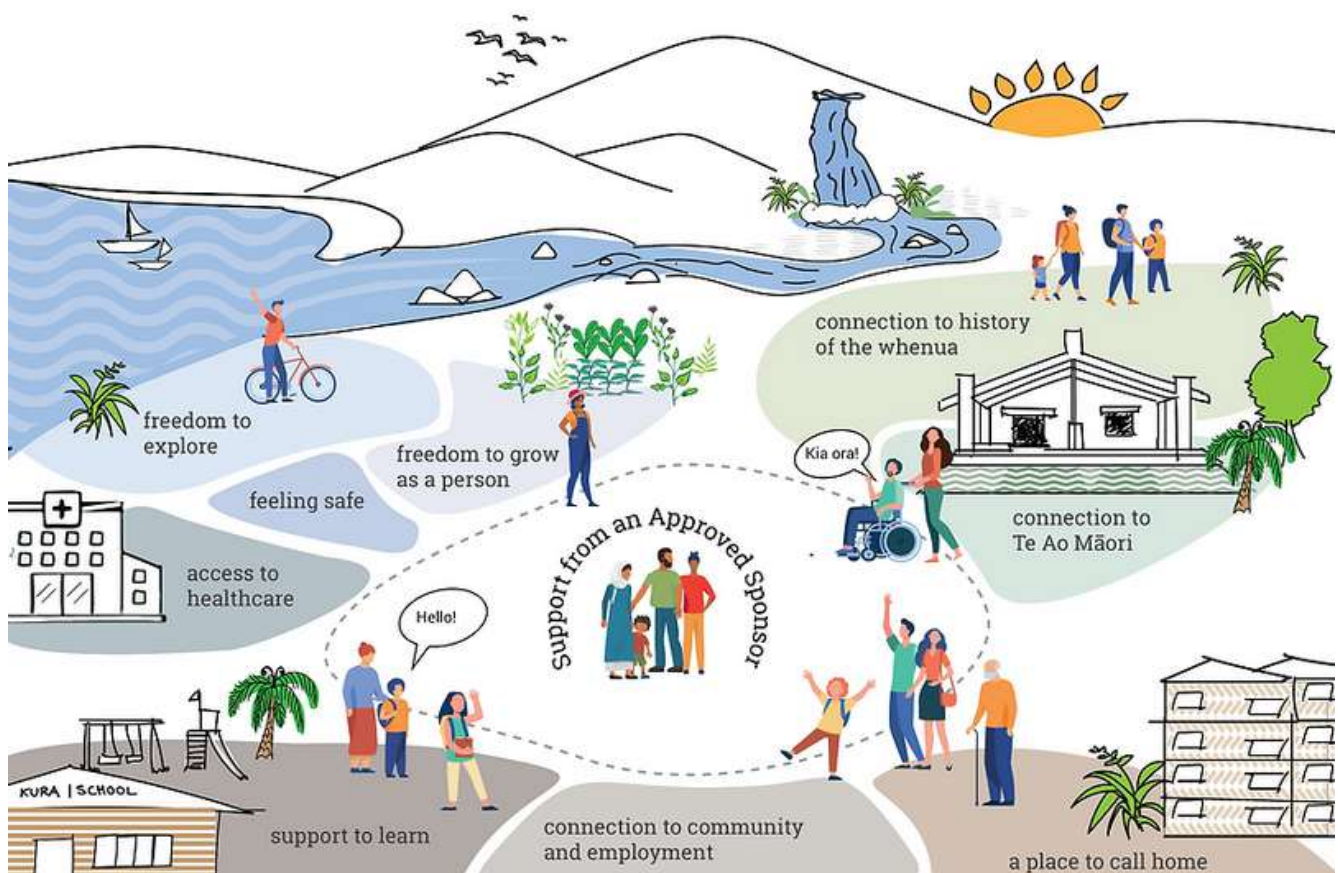
Source: Global Refugee Sponsorship Initiative

Difference to other refugee pathways

The **Community Refugee Sponsorship (CORS)** visa category is additional and complementary to the **Refugee Quota programme** and **Refugee Family Support category**.

It is a category where New Zealand-based approved community organisations (Approved Sponsors) apply to partner with refugees to support their settlement in the community.

Sponsored refugees are resettled directly into the community with the support of approved community organisations. They will **not** spend time at Te Āhuru Mōwai o Aotearoa, the Māngere Refugee Resettlement Centre. Approved Sponsors provide the support needed for these refugees over a two-year period, supported by **HOST International Aotearoa (HOST)**.



The four phases of the CORS programme

Phase One - Application Process



Potential sponsor organisations assess if their organisation is eligible for the CORS programme and whether sponsoring a refugee individual/whānau under the CORS programme model is right for them.

HOST International Aotearoa coaches potential sponsor organisations through the application process. Applications will be assessed by a panel of experts.

Phase Two - Post Approval



If sponsor organisations are successful, a Deed of Agreement with Immigration New Zealand is signed.

Approved Sponsors decide on the sponsorship pathway: a) **Nominated pathway** and/or **Matched pathway** (UNHCR identified).

Refugees offshore begin the immigration process. Approved Sponsors have access to a learning, communication and resources hub on SharePoint. The Community of Practice model is introduced.

Phase Three - Pre-Arrival of Refugee Individual/Whānau



HOST facilitates engagement between Approved Sponsors and sponsored refugees offshore and the practical day-to-day preparation for their arrival begins.

Approved Sponsors start engaging with the wider community, mana whenua, and social services sector in preparation for the sponsored refugees' arrival.

Learning and reflection for Approved Sponsor group members also continues.

Phase Four - Post Arrival of Refugee Individual/Whānau



It's now time to welcome the sponsored refugee individual/ whānau to Aotearoa. At this point it's all go. The Settlement Plan gets actioned, and relationships begin to develop. Approved Sponsors embed and refer to the Community of Practice for peer mentoring and support.

HOST is available for coaching and support for both Approved Sponsors and the people they are supporting.



Phase One - Application Process

Your Organisation

- Your organisation is a **legal entity** - such as incorporated society, registered company, charitable trust or religious organisation.
- You are able to demonstrate **community outreach** and connections within the broader community.
- Your organisation has **experience** working successfully with refugees or other vulnerable people.
- Your organisation has the **financial resources** to provide settlement services to sponsored refugees for two years.
- Your organisation has **capability and capacity** to secure suitable accommodation and support mandated refugees to enter the labour market and secure meaningful and sustainable employment.
- You can enter into a **Deed of Agreement for Services** with Immigration New Zealand (INZ) for the provision of settlement services.
- Your staff, volunteers and community **commit** to supporting refugees during their first two years of settlement in Aotearoa New Zealand.
- Your organisation **embraces diversity** and will be open to new religions and cultures.
- You have an understanding of **Te Tiriti o Waitangi** and te ao Māori.
- You have **connections and resources** that will help refugees as they begin their new life in Aotearoa New Zealand.

Your People

Consider who and how many staff, volunteers and community members (we recommend five to eight people in the core group) will be available for:

- The application process and development of a settlement plan.
- The implementation of the settlement plan prior to arrival of the refugee individual/whānau (family).
- To welcome refugee individual/whānau in your community.
- Provide ongoing support during the first two years of settlement to connect refugees to mana whenua, the wider community, services, and employment.
- Connections to the broader community and mana whenua to engage in the settlement of refugee individual/whānau in the wider community.

When asked about what attributes Approved Sponsors needed, previous sponsors and sponsored refugees answered:

- An openness to new religious and cultural competencies
- An understanding of Te Tiriti o Waitangi
- An understanding of te ao Māori

Phase One - Application Process

Get in touch with HOST International Aotearoa



If you have questions about the eligibility OR you are ready to proceed with the application process, contact **HOST International Aotearoa**, the umbrella organisation, which supports the implementation of the Community Refugee Sponsorship programme. You can contact us on:

Phone: 04 390 0991 | Mobile: 022 600 2042

Email: sponsor@hostinternational.org.nz

Website: www.refugeesponsorship.org.nz

Pre-requisites for sponsoring organisation

Application Form:

- Complete the Refugee Sponsorship Approved Community Organisation Application Form.
- You need to supply evidence of your organisation's legal status.

Settlement Plan:

- Complete all sections of the Refugee Sponsorship Settlement Plan Form. This is an example roadmap of how you intend to support arriving refugees.

Finance:

- Provide **financial information** and an overview of how you intend to cover the costs associated with sponsorship and provide evidence to show that you can support a refugee individual/whānau for two years.

Child Protection:

- A Child Protection Statement that outlines the policies and procedures that are in place to manage risks; and
- Proof of completion of the e-learning programme for all members of the core group (copy of Fundamentals of Child Protection Certificate).

Also consider who you are going to appoint as the first point of contact regarding your organisation's Child Safeguarding Statement.

Police Vetting:

- Provide evidence of successful completion of the Police vetting process for all members of your core group (staff and volunteers).

Please refer to the Phase One Toolkit for further details.

Phase One - Application Process

How are refugees considered for Community Refugee Sponsorship?

There is **no** open application process for the Community Refugee Sponsorship programme. In order to be considered for the programme, refugees will need to be:

- Nominated by a community organisation that is an Approved Sponsor in New Zealand; or
- Identified to Immigration New Zealand by UNHCR.

Refugees who are invited to apply to be sponsored under the Community Refugee Sponsorship must be mandated as refugees and pass security, risk, settlement and health assessments.

Applicants must be residing in a country which is a UNHCR priority area and one of the regions INZ's humanitarian programme resettles from: **Africa, the Americas, Asia and the Pacific, Middle East and North Africa.**

*Please note that refugees currently residing in **Turkey are not eligible** to be resettled to New Zealand under the Community Refugee Sponsorship programme. Turkey is included as part of the Europe region by UNHCR for the purposes of refugee resettlement.*

Refer to UNHCR's Projected Global Resettlement Needs for further details:

UNHCR - Projected Global Resettlement Needs 2023

Applicants must **not** be eligible to be sponsored for residence under **another family category, including the Refugee Family Support category.**

Principal applicants must have a basic understanding of **English**, have a minimum of **three years' work experience** or a **qualification** requiring at least two years' tertiary study, and be aged **between 18 and 45.**



HOST International Aotearoa is unable to provide immigration advice or match refugees with interested community organisations.



Phase Two - Post Approval

What's Next

Once approved as a sponsoring organisation (Approved Sponsors), **HOST** will continue working with Approved Sponsors during the preparation for arrival and settlement processes.

- **Nominated pathway:** Immigration New Zealand (INZ) will work alongside your organisation and the nominated refugee individual/whānau. HOST will provide additional support.
- **UNHCR matched pathway:** Once UNHCR or INZ advise that the sponsored refugees have been invited to apply, HOST will connect you so that you can begin to get to know the refugee individual/whānau and understand their settlement needs and desires.
- **Immigration New Zealand** will organise travel and coordinate this with you and HOST to ensure that you are ready to welcome the refugees when they land in New Zealand.
- **HOST** will work alongside Approved Sponsors to prepare communities and local iwi for welcoming refugee individual/whānau.
- HOST will provide a one-stop shop for resources, training and communication.
- HOST will work with you to identify areas where your group might want additional training.
- We will coach Approved Sponsor groups on meeting refugee needs during settlement.
- We will advise on other specialist support agencies.

Learning and support

HOST is committed to developing and providing learning and reflection tools and resources to provide additional support to Approved Sponsors:

- Access to a Microsoft SharePoint resources hub and a Teams communications hub to build a Community of Practice.
- Mana Ako Suite of Learning (learning and reflection interactive sessions and webinars):
 - Group considerations
 - Intercultural competency and communication
 - Hauora wellbeing models of care
 - Foundations of safe engagement
 - Reflective practice
- Connect Approved Sponsors with refugees offshore and facilitate introduction meetings.
- Guidance on preparing for arrival, orientation and settlement of sponsored refugees.
- Stories from former refugees sharing their stories and experiences in New Zealand.
- Settlement 101 videos and resources in preparation for arrival.



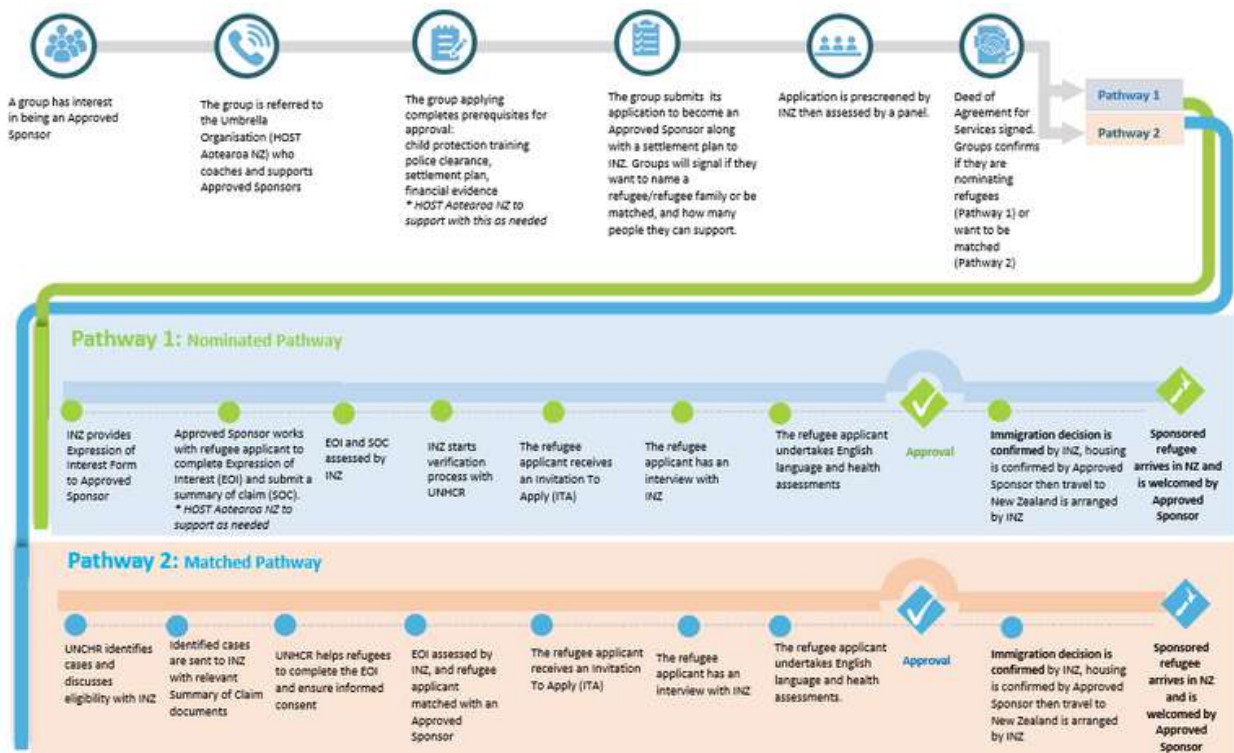
Phase Three - Pre-Arrival

Timeframes

The timeframes for arrival of sponsored refugees will vary depending on how long it takes for the sponsored refugees to be verified, complete the health, English language and immigration assessments, and travel to New Zealand from wherever they currently reside.

There may be additional travel delays due to ongoing COVID-19 restrictions in some parts of the world and the ongoing geopolitical instability worldwide. For less complicated cases, it may take between nine to twelve months for sponsored refugees to arrive in Aotearoa New Zealand.

Refugee Sponsorship Process Map



Phase Three - Pre-Arrival

Preparing for the arrival of refugee individual/whānau

Approved Sponsors will revisit their settlement plans and personalise the plan in communication with the sponsored refugee individual/whānau offshore. Approved Sponsors will take into consideration the sponsored refugee individual/whānau's needs and desires.

If Approved Sponsors require assistance, HOST can provide additional support, guidance, and advice. The most important aspects of this phase:

- Secure accommodation and furnish the home based on the refugees' individual and cultural needs.
- Notify and connect with service providers in the social services and health sectors.
- Have everything ready for the arrival of refugee individual/whānau.

HOST will work with Approved Sponsors by providing coaching, training, and connecting Approved Sponsors to service providers where needed. HOST will also work with you to identify barriers, suggest alternatives and come up with solutions within a strengths-based approach.

Community of Practice

HOST is committed to a **Community of Practice for approved sponsoring organisations**. This will involve but is not limited to:

- Making a communication hub available on Microsoft Teams for Approved Sponsors as a space for collaboration. Here you can share ideas, experiences and resources.
- Connecting Approved Sponsor groups to stakeholders and encouraging collaboration.
- Supporting Approved Sponsors to build or strengthen existing relationships with service providers in the sector.





Phase Four - Post Arrival

Welcoming the refugee individual/whānau

It's now time to welcome the sponsored refugee individual/ whānau to Aotearoa.

HOST will continue to provide ongoing support and coaching to Approved Sponsors and sponsored refugees for the duration of two years.

Once you have picked up the individuals/whānau from the airport and they are settled into their new home, it's time to start actioning their orientation to Aotearoa and link sponsored refugees to services in the community as outlined in the Settlement Plan, including:

- Assisting sponsored refugees to set up a bank account and register for an IRD number within one week of arrival.
- Meeting with local Work and Income office and assisting sponsored refugees to apply for relevant benefits.
- Registering with a primary healthcare service and a dentist, and booking a first appointment with their general practitioner.
- Registering children in school no later than two weeks post arrival.
- Enrolling adults in English language classes.
- Assisting sponsored refugees to access public transport, and if relevant, obtain a New Zealand Drivers Licence.
- Referring sponsored refugees to mainstream social services, including appropriate mental health services if required.
- Developing connections with mana whenua and community organisations in the settlement area.
- Familiarising with their new environment and surrounding areas such as neighbourhoods, parks and other natural features to help develop a sense of place.

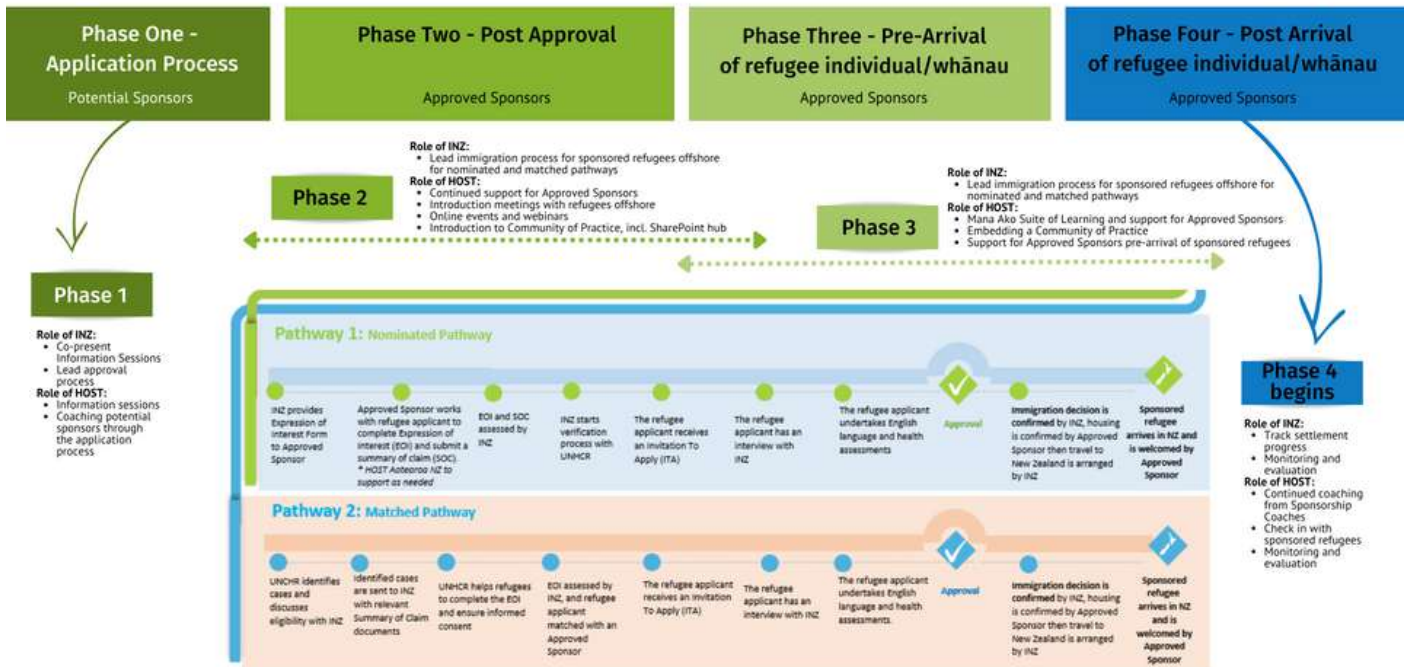
Reporting requirements for Approved Sponsors

- Reporting requirements as outlined in the Deed of Agreement for Services
- Participation in evaluation and monitoring with Immigration New Zealand
- Weekly contact with HOST within the first month in the community
- Monthly contact with HOST after the first month in the community

Continue to participate in a Community of Practice with other Approved Community Sponsor groups.

CORS phases process map

Mapping the four phases against the refugee pathway



Contact us

Contact

HOST International Aotearoa

Level 4, Solnet House, 70 The Terrace, Wellington

Phone: 04 390 0991 | Mobile: 022 600 2042

Email: sponsor@hostinternational.org.nz

Website: www.refugeesponsorship.org.nz

Immigration New Zealand

Email: cors@mbie.govt.nz

Website: Community Refugee Sponsorship | Immigration New Zealand